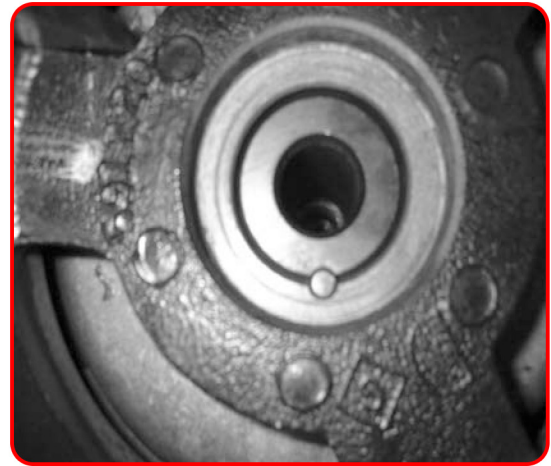


Crankshaft Pinning Kit

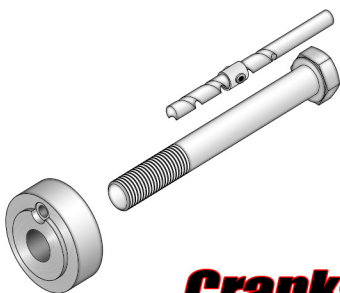
- 1.** Using the appropriate socket, loosen the crank bolt and remove it.
- 2.** Place the pinning jig onto the crank pulley and tighten it into place using the supplied M14 or M16 bolt and washer as shown in the photo to the right.
- 3.** Use the drill stop on the supplied 1/4" HSS drill bit 1-5/8" from the tip as shown in the illustration below. Now drill a hole in the crankshaft and harmonic balancer, stopping at the edge of the tape, also shown in the illustration below. **DO NOT drill farther than .800" into the face of the crankshaft!**
- 4.** Remove the M14 5.7L / 6.4L or M16 Hellcat bolt and pinning jig. Clean the area thoroughly of all metal shavings.
- 5.** Install the supplied stainless steel pin in the newly drilled hole. Reinstall the new crank pulley bolt and tighten it to factory torque spec.



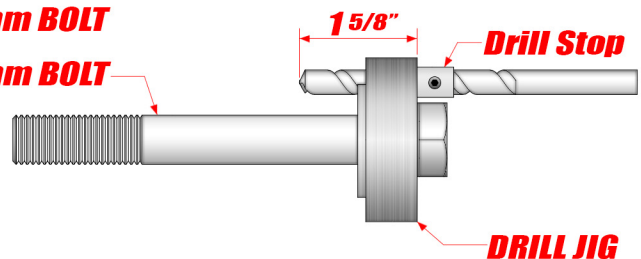
***Drilling pin hole in crank photo*



***Installed crankshaft pin*



**M14-1.50 x 120mm BOLT
OR
M16-1.50 x 120mm BOLT**



Crankshaft Pinning Kit Illustration